

E-compact instant water heater CEX-U



Application areas

Single point supply:

- > Kitchen sink
- > Washbasin
- > Double washbasin



E-compact instant water heater

CEX-U

Product information



Energy efficiency class **A** (Scale: A+ to F) **CEX-U** (Multiple Power System: 11 or 13.5 kW adjustable)

Part number:	2400-26413	
Type:	closed-outlet	
Maximum operating pressure [MPa (bar)]:	1 (10) *)	
Water connections (thread connections):	G 3/8"	
User set temperature [°C]:	20 to 60	
Hot water output at $\Delta t = 33\text{ K}^{1) 2)}$ [l/min]:	4.8	5.8 ³⁾
Switch-on flow rate / max. flow rate ⁴⁾ [l/min]:	2 / 5	
Nominal power rating ⁵⁾ [kW]:	11.0	13.5
Nominal voltage [3~ / PE 380 – 415 V AC]:	permanent connection	
Nominal current ²⁾ [A]:	16	20
Required cable diameter ²⁾ [mm ²]:	1.5	2.5
Bare wire heating system IES®:	✓	
Ready for Smart Control:	✓ (optional)	
Ready for FX wireless remote control:	✓ (optional)	
Solar-compatible, suitable for reheating (inlet temperature $\leq 60\text{ °C}$):	✓	
VDE approved / Protection class:	✓ / IP 24	
Specific water resistance at 15 °C [Ωcm] \geq :	1000	
Nominal volume [litres]:	0.3	
Weight filled with water [kg]:	approx. 2.7	
Dimensions (height × width × depth) [cm]:	29.4 × 17.7 × 10.4	

*) Also approved for pressureless operation 1) Temperature increase e.g. from 12 °C to 45 °C 2) Depending on the selected power rating 3) Mixed water 4) Limited flow amount for optimal temperature increase 5) Related to nominal voltage 400 V

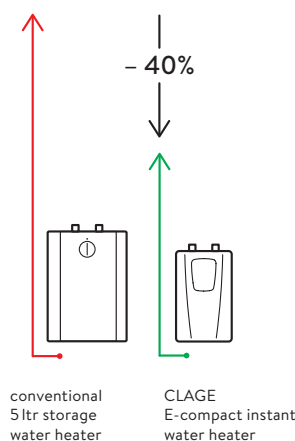
Description

- > Electronically controlled instant water heater (undersink model) with compact design
- > Sensor-key operation with LED indicator for precise temperature setting between 20 °C and 60 °C
- > Two programming keys for individual pre-set temperatures, activatable temperature limit and operating displays
- > No more need to add cold water
- > Easy installation under the kitchen sink facilitated by small dimensions and external 3/8 inch water connectors
- > With power cable for 3-phase power supply
- > Precise temperatures due to TWIN TEMPERATURE control TTC® up to the capacity of the appliance
- > The efficient bare wire heating system IES® reduces lime scale deposits and provides an extended service life
- > With the Multiple Power System MPS®, the maximum power rating is set at the time of installation: 11 or 13.5 kW
- > Can also be controlled via tablet or smartphone (iOS9 or higher / Android-OS 4.4 or higher, FXE3 adapter and the »Smart Control« app required)
- > Solar-compatible (inlet temperature $\leq 60\text{ °C}$)

Profitability comparison (Source: www.clage.com)

Saves up to 40 % energy compared to conventional storage heaters.

The E-compact instant water heater features an economical operation. The water is heated directly as it flows through the unit. Hot water is not stored in a tank, which saves standby energy that would be otherwise required.



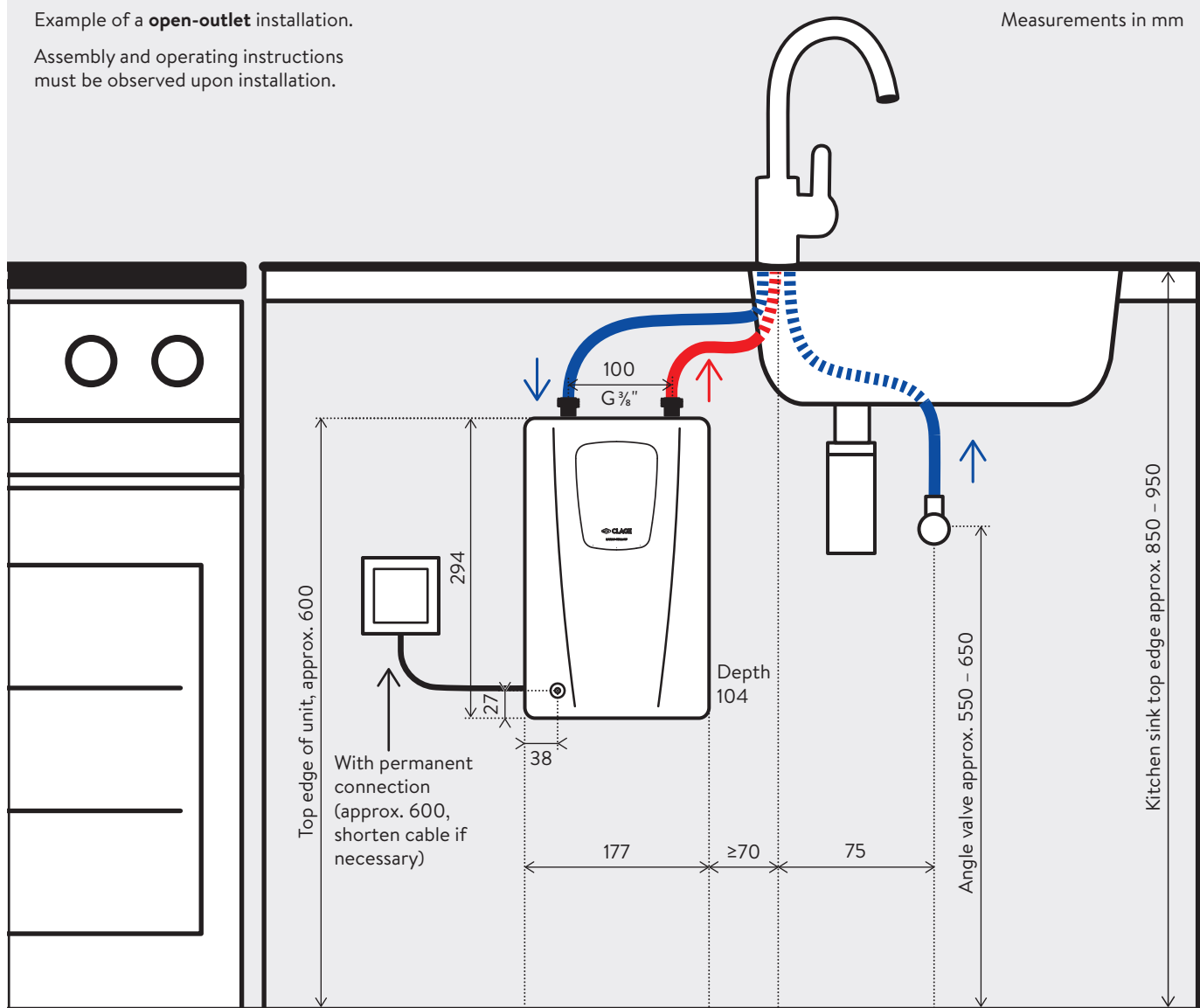
E-compact instant water heater CEX-U Installation



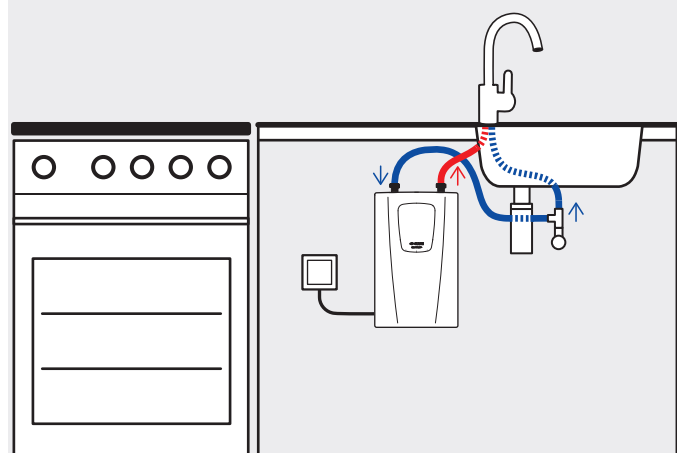
Example of a **open-outlet** installation.

Assembly and operating instructions must be observed upon installation.

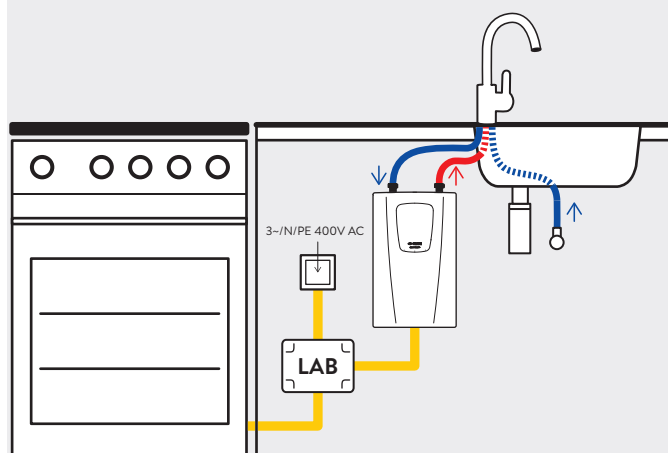
Measurements in mm



Alternative: **closed-outlet** installation



Electrical connection with **load shedding switch LAB** at only one existing 400 Volt cooker terminal outlet box, if no separate outlet is available for the instant water heater.



E-compact instant water heater CEX-U Accessories



Accessory for undersink installation (included)

FVS

Flexible connecting hose $\frac{3}{8}$ inch cap nut \times $\frac{3}{8}$ inch cap nut, length 50 cm

Part no. 89620

T-piece

Special T-connector $\frac{3}{8}$ inch cap nut \times $\frac{3}{8}$ inch angle valve 10 mm

Part no. 89610



FXS3 (C) remote control set (optional)

FX3 remote control including Bluetooth® remote control adapter FXE3 (C) for integration into the instantaneous water heater as a set. In addition to the operation at the device, the remote control allows the comfortable temperature adjustment of the instantaneous water heater over a distance of approx. 10 metres in the building. Secure Bluetooth® radio transmission, stepless temperature selection via two buttons, two fixed value buttons and an LCD display, magnetic wall bracket and batteries (included in delivery). IP 20. Dimensions (H \times B \times T): 5.8 \times 12.5 \times 1.9 cm

FXS3 (C): Part no. 3200-34027



FXE3 (C) remote control adapter (optional)

Bluetooth® remote control adapter for integration into the instantaneous water heater to connect the water heater to a smartphone / tablet or the FX3 remote control. This adapter is required if the appliances are not yet equipped with an FX3 remote control.

FXE3 (C): Part no. 3200-34026



LAB (optional)

Load shedding module (electrical installation kit) with pre-installed cables, contactor and load shedding relay, for joint connection of an instant water heater and an electromechanical cooker at a cooker terminal outlet box, if no separate outlet is available for the instant water heater. IP 55. Dimensions (H \times W \times D): 18 \times 13 \times 8 cm

LAB: Part no. 82260



Recommended accessories for kitchen application (optional)

EAK (vented)

Single-lever mixer tap with side lever and swivel spout 20 cm

EAK: Part no. 1100-04430



Recommended accessories for bath application (optional)

EWT / EWT-C

Single-lever mixer tap, nickel and lead free waterways, Easy-Fix fastening system and drawbar drain fitting, spout 11.2 cm, height x width: 15,1 x 17,5 cm

EWT (open-outlet): Part no. 1100-04420

EWT-C (closed-outlet): Part no. 1100-04421



Aerator CSP 6, CSP 6a and CSP 6i (optional)

The aerator at the tap supports the energy- and water-saving operation of the compact instant water heater. The new special CSP aerators mix air into the water and thus create a uniform water stream that does not splatter but softly cascades down.

- > Aerator insert for tap adapter M22/24 at the tap
CSP 6 (< 3.5l / min): Part no. 0010-00461
- > Aerator with chrome tap adapter M24a
(suitable for taps with internal thread at outlet)
CSP 6a: Part no. 0010-0047
- > Aerator with chrome tap adapter M22i
(suitable for taps with external thread at outlet)
CSP 6i: Part no. 0010-0046